








DM Ultralang 2025

Bulletin 2 DM Ultralang Sunday 6th April 2025

Organizer:	OK Melfar - Middelfart Orienteringsklub
Event page:	https://www.ok-melfar.dk/V2/index.php/lob/dm-ultralang-2025
Classifikation:	<p>Danish Championship Ultralang 2025</p> <p>The event is a ☆☆☆☆-event.</p> <p>Dispensation: There is a Rule Deviation Request sent to the IOF Office for mass start as start method.</p>
Date:	<p>Sunday 6th April 2025</p> <p>First start at 1100</p> <p>The event arena will open at 10:00.</p>
Competition rules	IOF's competition rules for international foot orienteering events 2022 (the WRE relevant part) supplemented by DOF's rules 2023 §§ 1.14 (Embargoed areas), 2.10 (Start rights) covering conditions not covered by the IOF rules, plus special rules for participation.
Competition area and Embargoed area:	<p>Stenderupskovene</p> <p>Competitors in the WRE classes are not permitted to enter the embargoed area until the competition is finished (see embargoed area on the event page).</p> <p>Embargoed area</p>
Meeting point and parking:	<p>Marking starts from Sønder Stenderup.</p> <p>GPS 55.46078, 9.61311</p> <p>From here approx. 5 km to parking.</p> <p>Parking: Parking is on Løveroddevej and starts approx. 100 meters before Løverodde beach. Drivers will then be directed to park behind each other on Løveroddevej away from Løverodde Beach. The last to arrive should expect to walk approx. 1 km to the event site.</p> <p>Parking attendants' instructions must be followed. Parking is not permitted until a specific parking space has been designated.</p>

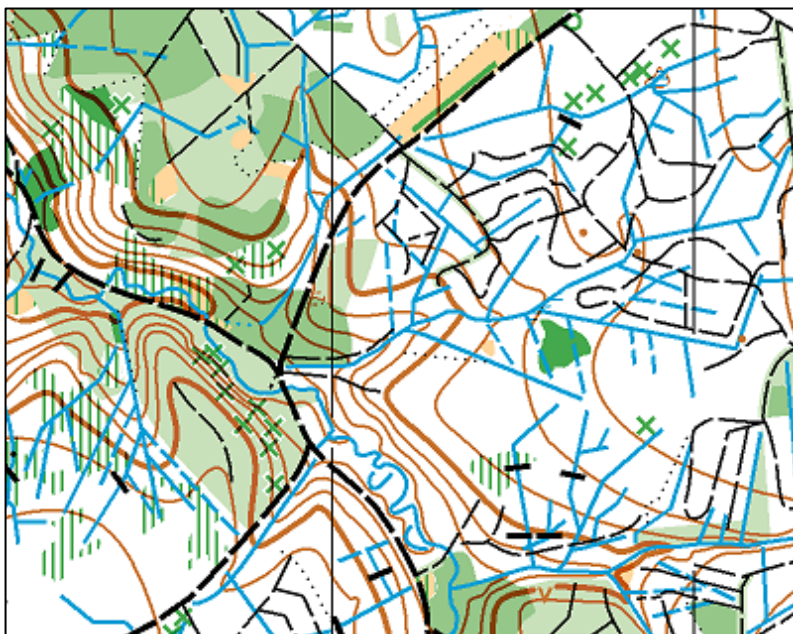
	<p>Upon arrival, you will be met by parking attendants who will indicate a place on the right side of the road where you should park. There must be room for other drivers to drive past your parked car. Exit via the same road by making a U-turn and drive back along Løveroddevej.</p> <p>Buses are parked in the parking lot at these coordinates (55.488259, 9.626613). It is approx. 1.1 km to the event site from there. Buses are not allowed to drive to Løverodde Strand to drop off passengers.</p> <p>Once you have parked on Løveroddevej, follow the paved road down towards the beach. You are not allowed to deviate from the paved road, as it goes through the race area.</p> <p>Please form carpools, both to save parking spaces and to limit the negative effects of driving. It is generally not possible to drive to the turning area at Løverodde Strand.</p>
Distances:	<p>Meeting point to parking app. 5 km</p> <p>Parking to event arena from 100 m</p> <p>Start will be from the arena.</p>
Event arena	<p>The venue is located on grass.</p> <p>The event office is located at the event site and opens at 1000.</p> <p>The event office will provide club bags with bib numbers, start lists and rental SI tags.</p>
Map:	<p>Stenderupskovene, updated in 2025</p> <p>ISOM 2017-2 rev.6</p> <p>The maps are approved by a map consultant</p> <p>The map is drawn based on MapMagic. The map is drawn by members of OK Melfar.</p> <p>Maps are offset printed at Grafisk Forum, Horsens on Pretex paper.</p> <p>Contour: 2,5 m</p> <p>Scale: 1:15.000 for classes D21 (WRE) and H21 (WRE).</p> <p>Emergency telephone number +45 30295344 is printed on the race map.</p> <p>Special interpretations:</p> <p><u>Blackberry thicket</u> is shown as undergrowth:  or </p> <p>If the thicket is higher than 1 meter, the signature difficult to penetrate forest is used: </p> <p><u>Tree roots</u>: Only vertical roots higher than 2 meters are included: </p> <p><u>Special forest type</u>:</p> <p>Some areas in the forest have been thinned, so branches and treetops are left scattered on the forest floor. When zigzagging through the areas, you can run freely, but the many changes of direction reduce the total running time. The areas are shown as difficult to penetrate forest (medium green) </p> <p>There is a map turn.</p>



**Terrain
description:**

The forests are:

- fairly flat, but with steep slopes and ravines down towards Lillebælt and Kolding Fjord. In these ravines there are some curved details.
- structured by a clear road network of long straight forest roads. There are not many paths, but some traces from previous forestry work. The traces can be seen in the forest either as openings in the vegetation, old tractor tracks or different ground vegetation.
- drained by many ditches, most of them only with seeping water. Some underpasses have been destroyed, so the ditches there are very full of water, and new lakes have formed. The lakes are not passable.
- in some areas quite open, and undergrowth has been able to spread. The undergrowth is least widespread in early spring.



Find an old map on the event page.

Classes:


Classes and winning times due to DOF Reglement 2025.

Class	Length	Controls	Climb	Water points	Map turn
W21	15.320	29	265	3	Yes
M21	24.670	47	300	5	Yes

For all classes with mass start there will be forkings.

All courses that run longer than 10 kilometers will have a mandatory spectator passage at the event site, where there will be a possibility of drinking water.

On the map, prohibited areas are marked with purple hashing. The areas are not marked in the forest. It is forbidden to run into the prohibited areas, and will result in disqualification.

	<p>The symbol for map turn</p>  <p>Maximum time for all classes is 4 hours.</p>
Punching system:	<p>SportIdent Rental SI tags are provided in club bags.</p> <p>Due to the number of controls we recommend not using SI tags Vers. 5 (number 1-499999) and 8 (number 2000000 til 2999999).</p> <p>Rental SI must be returned at the finish line, lost SI tag will be charged with 550 kr.</p>
Start:	<p>First start will be at 1100 for the classes W21, M21, W16, W18, W20, M16, M18, M20.</p> <p>Mass start: In the waiting area clear and check the SI tag. 5 min. before the start, the group of runners is called forward and they go to the map issuing station, where the runner takes the race map that corresponds to the runner's bib number. The card is rolled up and provided with an elastic band, which must not be removed at this time. The runner continues into the start box with the rest of the group. Between the map issuing station and the start box, the map number and bib number are checked by the start staff. When the starting signal is given, the elastic band can be removed from the map and the runner continues onto the course. The elastic band is thrown on the ground and picked up by the start staff. The starting point is located immediately in front of the start box. The control does not need to be punched. The first starting group starts at 1100 and has bib numbers 100-199. The starting group is called forward at 1055.</p> <p>Runners arriving too late should report to the Put'n Run start and receive their map there. Runners starting too late will not be assigned a new starting time.</p>
Finish:	<p>The route from the last control to the finish is marked. This is followed and the finish control – which is 5 m after the finish line – must be punched. The finish line is marked with a finish banner. In close races, the runner's position is determined by a photo finish when crossing the finish line.</p> <p>After punching the finish control, the runner approaches the finish staff and has his/her SI tag read.</p> <p>The map can be kept after the race.</p> <p>Rental tags are handed in. Lost rental SI tags are replaced with 550 DKK.</p> <p>There will be water at the finish.</p>



Complaints:	<p>Complaints must be given to the Event manager no later than 30 min. after crossing the finnish line.</p> <p>The Event manager can be found via the event office.</p>
Prizes:	<p>In the classes D/H 21, the winner receives DIF's championship medals. Number 2 and 3 receive DOF's silver and bronze medals.</p> <p>Only Danish citizens or foreign citizens living in Denmark representing a Danish club can receive medals.</p> <p>Prize winning ceremony time is expected at 1430. To be announced at the venue.</p>
Services:	<p>At the event arena there will be: Toilets.</p> <p>There will be a kiosk at the venue with the following selection:</p> <ul style="list-style-type: none">- sandwiches- pasta salad- hot soup- breakfast bun with cheese- cake and snack- soda and hot drinks. <p>First aid tent. Emergency telephone number +45 30295344.</p> <p>There will not be any shower facilities, but Kolding Fjord is located next to the venue.</p>
Visa:	New to Denmark
Insurance	Insurance is the responsibility of the individual participant. All participation is at your own risk.
Accommodation	OK Melfar cannot offer accommodation and recommends searching the internet.
Event manager:	Lars Thestrup, OK Melfar Mobil +45 2330 0898 Email: lars.thestrup66@gmail.com
Event controller:	Lone Rasmussen, OK SNAB
IOF Event Advisor:	Kell Sønnichsen, OK PAN
Course planner:	Henrik Rindom Knudsen, OK Melfar
Course controller:	Jeppe Ruud, OK PAN
Jury	Chairman Lone Rasmussen Giacomo Schmidt Frattari, Silkeborg OK Camilla Dalgaard, Kolding OK Arne Nygaard, FIF Hillerød
Mappers:	Members from OK Melfar Map design: Gert Pedersen, OK Melfar